

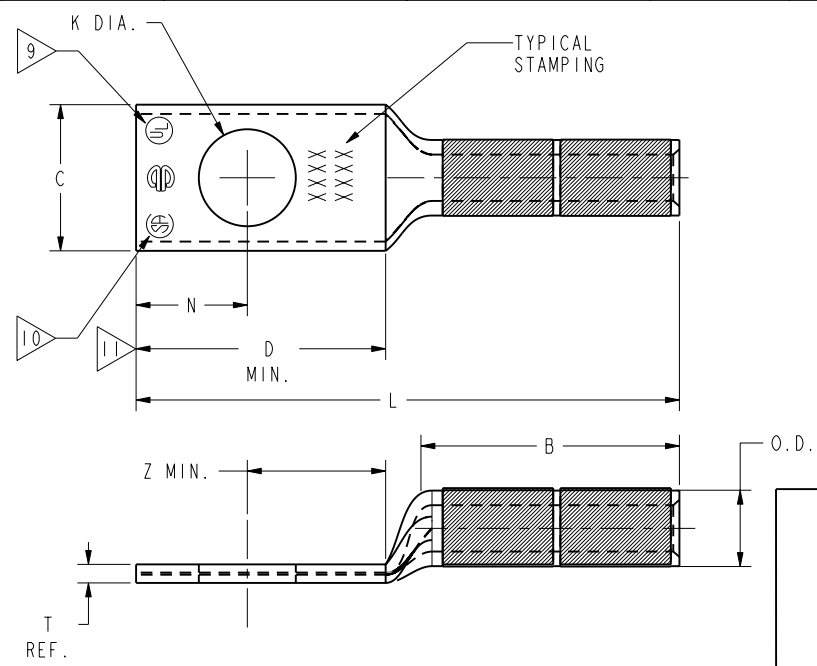
DRAWING NO. SD079849	7			6		5		4		3		2		1							
	CATALOG NUMBER	CODE (AWG)	NAVY	METRIC SIZE (CLASS 2)	BOLT SIZE	METRIC BOLT SIZE	DIMENSIONS						REV	DATE	DESCRIPTION	ECO	BY	C'H'K.			
YA29	YA29N	YA29TC38	YA30	YA30N	YA31	YA31N	B	C	K DIA.	L	N	O.D.	T REF.	Z MIN.	B	10/11/2010 5:00:00 PM	UPDATED TOOLING LIST ON SALES DRAWING.	22390	BT	MA	
STRANDED COPPER CONDUCTOR ACCOMMODATED																					
YA29	250 kcmil	250	120mm ² STR [14.5]	1/2	M12	1.62 [41]	1.11 [28]	.53 [13]	3.26 [83]	.53 [13]	.75 [19]	.16 [4]	.55 [14]								
YA29N				1/2	M12	1.62 [41]	1.11 [28]	.56 [14]	3.45 [88]	.63 [16]	.75 [19]	.64 [16]									
YA29TC38				3/8	--	1.62 [41]	1.10 [28]	.40 [10]	3.01 [76]	.41 [10]	.75 [19]	.42 [11]									
YA30	300 kcmil	300	150mm ² STR [16.2]	1/2	M12	2.00 [51]	1.20 [30]	.53 [13]	3.69 [94]	.53 [13]	.81 [21]	.16 [4]	.55 [14]								
YA30N				1/2	M12	1.20 [30]	.58 [14]	3.88 [99]	.63 [16]	.81 [21]	.64 [16]										
YA31	350 kcmil	350	-----	1/2	M12	2.00 [51]	1.29 [31]	.53 [13]	3.73 [95]	.53 [13]	.88 [22]	.18 [4]	.55 [14]								
YA31N				1/2	M12	1.29 [31]	.56 [14]	3.92 [99]	.63 [16]	.88 [22]	.18 [4]	.64 [16]									

CONNECTOR SIZE	TOLERANCES					
	B	C	K DIA.	L	N	O.D.
-8C THRU -25	±.06	+ .04 - .02	±.02	±.09	±.03	±.01
-26 THRU -34	±.08	+ .04 - .06	±.02	±.12	±.03	±.01
-35 AND UP	±.09	±.06	±.02	±.15	±.06	±.01

TOLERANCE BLOCK

INSTALLATION TOOLING (# OF CRIMPS)																	
CATALOG NO.	COLOR CODE	DIE INFORMATION			MECHANICAL				HYDRAULIC						DIELESS (# CRIMPS)		WIRE STRIP LENGTH
		DIE INDEX	TYPE	YIMRTC	OUR840	MD6 MD7	MD6--R2 MD7-34R	PATMD6 PAT600 Y500CT	Y34A Y34B Y34BH	Y35, Y39 Y750, PAT750	Y46, PAT46	Y45	Y48B	Y60BHU	MECHANICAL	HYDRAULIC	
YA29 YA29N YA29TC38	YELLOW	16	YELLOW DIE SET	-----	X29RT(8)	W29VT(4)	W29RT(4) W29VT(4)	W29VT(4)	A29R(2)	U29RT(2)	U29RT(2)	U29RT(2)	C29R(2)	L29RT(1)	MY29-3(2) MY29-11(2)	PAT81KFT(2) Y81KFT(2) PAT4PC834(2) Y4PC834(2) PAT644(1) Y644(1)	1-11/16"
YA30 YA30N	WHITE	17 298	WHITE DIE SET	-----	-----	-----	W30RT(4)	W30VT(4)	A2BAR(2)	U30RT(4) U28ART(4)	U30RT(4) U28ART(4)	U30RT(4) U28ART(4)	C30R(1) C28AR(1)	L30RT(1)	-----	PAT81KFT(3) Y81KFT(3) PAT4PC834(3) Y4PC834(3) PAT644(1) Y644(1)	2-1/16"
YA31 YA31N	RED	18 324	RED DIE SET	-----	-----	-----	W31RT(4) W31VT(4)	W31VT(4)	-----	U31RT(4) U29ART(4)	U31RT(4) U29ART(4)	U31RT(4) U29ART(4)	C31R(1) C29AR(1)	L31RT(1) L29ART(1)	-----	-----	2-1/16"

- NOTES:
- MATERIAL : COPPER TUBING.
 - FINISH: ELECTRO-TIN PLATED.
 - CATALOG # PT6515 ADAPTOR IS REQUIRED TO USE "U" DIES IN Y45 SERIES TOOLS.
 - CATALOG # PUADP-1 ADAPTOR IS REQUIRED TO USE "U" DIES IN Y46 SERIES TOOLS.
 - Y35P3 INDENTOR ADAPTOR REQUIRED FOR Y34PR INDENTOR.
 - PERMANENT DIE IN TOOLING.
 - DIMENSIONS IN BRACKETS [] ARE IN MILLIMETERS ROUNDED OFF TO THE NEAREST MILLIMETER, UNLESS OTHERWISE NOTED, AND ARE FOR REFERENCE ONLY.
 - FOR USE BY CUSTOMERS THAT HAVE THIS HYPRESS™ NO NEW Y34A HYPRESSES™ ARE BEING PROCESSED. Y34A USES A--D NEST DIES ONLY.
 - CONNECTORS ARE UL LISTED; UNDRILLED VERSIONS ARE NOT UL LISTED.
 - CONNECTORS ARE CSA CERTIFIED; UNDRILLED VERSIONS ARE NOT CSA CERTIFIED.
 - FOR UNDRILLED VERSIONS ADD SUFFIX "U" TO END OF CATALOG NUMBER. FOR UNDRILLED VERSIONS, USE D MIN. = N MAX. + Z MIN.
 - "X", "W-RT", "W-VT", "U", & "L" DIE SETS ARE COLOR CODED. "A", "B", AND "C" DIES ARE NOT COLOR CODED. NESTS AND INDENTOR TYPE ARE NOT COLOR CODED.



REFERENCE: SD17179, (YA-2, YA-4)
SE209241

TO ORDER BURNDY® PRL		HYLUG™	
ITEM NO:	N/A	DRAWING NO:	SD079849
CAT. NO:	YA-, YA-N, YA-TC- (TABLE)	REV:	B
DRAWN BY:	C. RACANO 6/15/77	SIZE:	D
CHECKER:	CAR 6/16/77	SCALE:	NTS
DSN APPVL:	LB 6/24/77	PROJ. #:	---
MFG APPVL:	N/A	DOCUMENT TYPE:	Sales
QC APPVL:	C. ACKERMAN 9/9/94	REL LEVEL:	Released
MKT APPVL:	T. NELSON 9/07/94	SHEET	5 OF 10

REV: PE0200